



ONERESTORE

COMMERCIAL RESTORATION

THE WAVE OF THE FUTURE



1

ONERESTORE[®]
RESTORATION DETERGENT

1

RESTORE
EVERYTHING
SAFELY[®]

The breakthrough product that provides remarkable versatility, cleaning power and safety all in one.

ONE CHOICE...BECAUSE IT WORKS!

FOR PROFESSIONAL USE ONLY

THE BEST INFORMED CHOOSE



EaCo Chem has been producing exceptional cleaning chemicals for decades with nothing but the best results. Our chemistry has been approved worldwide on many projects. Professional cleaners that choose to stay ahead of their competition have one thing in common - the desire to be the best. That includes using the best chemicals.



Huntsville Hospital AL, elevated walkway

INDUSTRIES WE SERVE:

- RESTORATION
- NEW CONSTRUCTION
- WINDOW RESTORATION
- HARDSCAPE
- PAINT STRIPPING
- HOUSE & DECK
- FLEET WASHING

WHY ONERESTORE®?



OneRestore® is a breakthrough product that provides remarkable versatility cleaning power and safety all in one. Capable of removing the deepest stains from virtually any surface. It is also used to safely restore glass and anodized aluminum.



Galveston Courthouse TX travertine



Glendale Medical CA, metal panels

THE WAVE OF THE FUTURE

RESTORE EVERYTHING SAFELY®

1 ONERESTORE® RESTORATION DETERGENT 1



The Biosphere 2 - Oracle, AZ

- **Limestone**
- **Sandstone**
- **Brownstone**
- **Marble (unpolished)**
- **Precast**
- **Exposed Aggregate**
- **Cast Stone**
- **Poured Concrete**
- **Brick**
- **Block**
- **EIFS**
- **Terra Cotta**
- **Granite (unpolished)**
- **Alucobond**
- **Paint**
- **Glass**
- **Anodized Aluminum**
- **Vinyl**
- **Metals**
- **Wood**
- **Composite Decking**
- **Stucco**
- **Sealer Cleaning/Removal**



www.eacochem.com

THE WAY OF THE FUTURE

ONE CHOICE...BECAUSE IT WORKS!

THE URBAN HIGH RISE RESTORATION SYSTEM

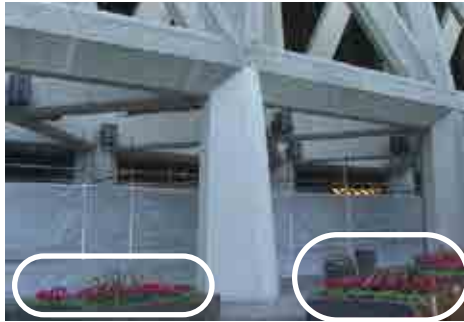


TransAmerica "Pyramid" San Francisco, CA

In San Francisco, CA, the TransAmerica Building or "the Pyramid" is one of the most recognizable buildings in the country. When the time came to clean the building, multiple issues had to be considered.

Like many urban structures, glass comprises a large part of the structure. With Redwood trees in the background, there was no practical way to cover up the trees. OneRestore® not only cleaned the years of smog and other stains, but did so without harming the glass or Redwoods.

With the bay on one side and the ocean on the other, wind drift was a constant issue when rinsing. A low pressure initial rinse, along with an application of Cleansol BC (diluted 50 parts water to 1 part solution) neutralized the OneRestore® prior to final rinsing.



The planters with sensitive plants were directly below areas that were being cleaned. As you can see they were not covered and no damage occurred.



The planters with sensitive plants were directly below areas that were being cleaned. As you can see they were not covered and no damage occurred.

There are three Principle Points of Safety when cleaning with the Urban Highrise Restoration System:

1) **Safety** - OneRestore® is not regulated by the DOT and ships non hazardous in its concentrate form. OneRestore® undiluted will not damage glass, skin or other substrates when following directions.

2) **Chlorine**, the principal engine of OneRestore®, is present in all water that is treated for consumption in the U.S.A.

3) **Neutralization** is not left to chance with this system. When applied to alkaline surfaces (limestone, mortar, concrete, etc.), OneRestore®'s acidic component is neutralized in the process of run down. Cleansol BC (50:1) is used as a second step prior to rinsing to assure neutralization of any remaining residues.

Important to note - Initial rinse should be done with low pressure to avoid any back spray. You can then follow with a higher rinse to complete the stain removal.



The Mall of America in Bloomington, MN is one of the largest indoor malls in the country. It is also the perfect example of post 1950 construction, with the wide variety of substrates used in construction.

The inset photo shows some severe staining on the lower section. OneRestore® was able to clean the multitude of substrates and still be safe enough for a mall setting.



ONERESTORE® AND GLASS



City Center Tower Nashville, TN

OneRestore® has proven over time to be very effective at removing a wide variety of coatings, concrete leaching, pollution and wind blown clay deposits from glass, either by itself or in conjunction with Graf-Ex. Whether it is an anti-graffiti coating, complex acrylic, silicone, Silane/Siloxane waterproofers or acrylic waterproofers, these can be easily and safely removed.

The City Center Tower in Nashville, TN was clouded by siloxane overspray. The overspray was removed by OneRestore® using a simple wipe on/wipe off process.



Heavy coatings of acrylic resin (left) and modified siloxane (right) were applied to this mirrored glass during testing. Cleaning was performed at various time intervals to simulate real case scenarios. Graf-Ex removed the coatings with ease, while OneRestore® wiped away any residual haze.



Before



After

These hard water stains (above) in Dallas, TX were so severe that you could not see in or out. After an application of OneRestore® (below), the difference is as clear as night and day!



Before



After

The Biosphere 2 - Oracle, AZ

The Biosphere 2 in Oracle, AZ is the world's largest greenhouse. Taking up 3.14 acres, the Biosphere 2 is a massive research center that requires an enormous amount of sunlight to allow the plants inside to thrive. In 2008, the glass panels were barely letting any sunlight in, as seen in the before photo.

After cleaning the building with OneRestore®, the glass panels were so clear that the sunlight actually browned some leaves unaccustomed to so much light. Even with the glass panels being coated in a film of wind blown debris, no brushing was required to clean them. OneRestore® was able to accomplish the task at hand simply, easily and safely!



ONE CHOICE...BECAUSE IT WORKS!

ONERESTORE® AND ANODIZED ALUMINUM

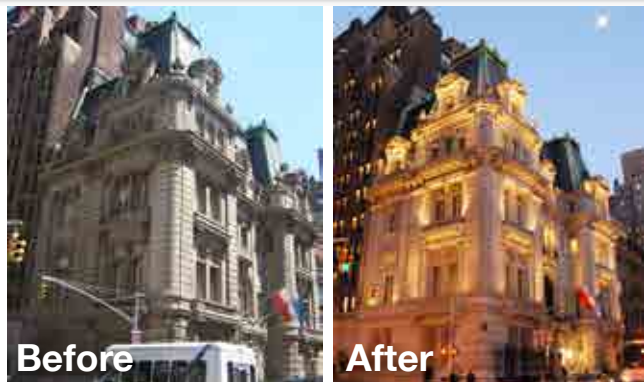


Even though OneRestore® is a powerful, commercial grade restoration detergent, the bufferings allow it to be perfectly safe on anodized aluminum frames.

As seen in the before photo, the oxidation on the frame on the left makes the frame appear dull and worn. After an application of OneRestore®, the anodized frame looks new, as seen in the photo on the right.

A.R.T. (Anodized Restoration Treatment) would be applied to this frame once it is dry to bring back the natural luster.

ONERESTORE® AND HISTORICAL STRUCTURES



Polish Consulate - New York, NY

In Manhattan, the Polish Consulate was in drastic need of cleaning. Originally built in 1905 as the de Lamar Mansion and listed on the National Register of Historical Places in 1983, this magnificent building is the anchor for its block.

In 2008, the contract was awarded to restore this historical site. OneRestore® was the main product selected for the job due to the wide variety of staining issues ranging from city traffic to general build-ups. The intricate details had to be carefully preserved while not harming the surrounding buildings or adjacent surfaces. With its safety and user friendly qualities, OneRestore® was the best option.

At night, the building is lit up and the buildings details are even more magnificent.

From the unpolished marble around the entrance to the ornate details around the entire building, OneRestore® was able to make all of the details look new.



OTHER HISTORICAL SITES



Historic One West Wilson Street in Madison, WI was a unique state project. The original product specified was one of our competitors restoration cleaners. However, after several attempts by the contractor to clean the surface, there was little change to the grime. Someone on site overheard conversations about the lack of results and mentioned the cleaning agent was the problem. OneRestore® was originally tested, however politics took over!

The following week, OneRestore® was re-tested head-to-head with their cleaner. After 45 minutes of applying and scrubbing with their product, the wall showed little change. With only one application of OneRestore®, no scrubbing and a ten minute dwell time, the area tested looked new!

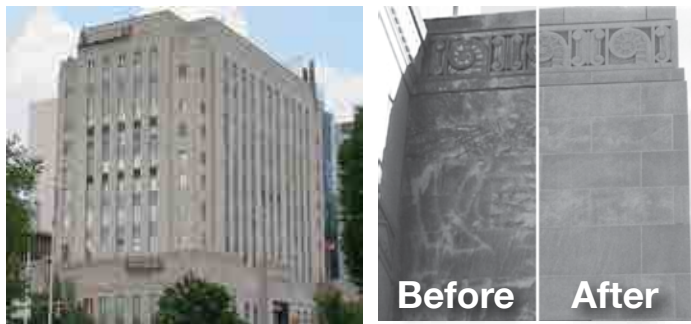
The state of Wisconsin is so pleased at the results that they are now specifying OneRestore® for several other state-run historic restoration projects!

ONERESTORE® AND LIMESTONE

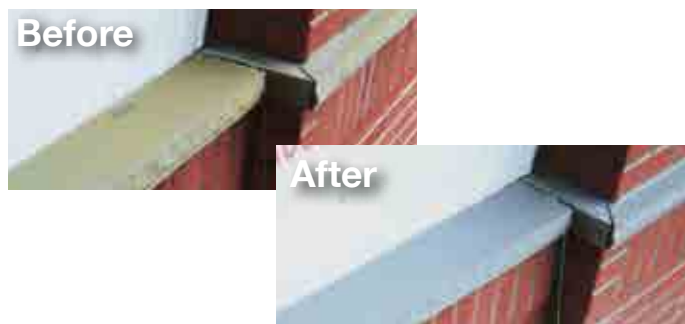
Limestone is one of nature's most durable building surfaces, literally lasting for hundreds of years. Limestone's longevity is why it is on so many high profile buildings. Yet for all its durability, the fact that it is so porous makes limestone highly susceptible to deep stains that can greatly diminish its natural beauty.

Traditionally, the limestone industry has argued against using Hydrochloric Acid (HCl) to clean limestone. However, our HCl based products have been proven to be used safely and effectively on limestone.

For simple cleaning, OneRestore® alone is more than capable of handling the task. For deeper stains or crust, Stripper Cream is used in conjunction with OneRestore®.



The staining on the County Courthouse in Oklahoma City, OK was an extreme case of staining where OneRestore® was used to remove the stains with absolutely no whitening or etching of the stone.



The photo on left shows a limestone window sill that has been stained by an acid used to clean the wall. The photo on right shows how OneRestore® was able to restore the stone to its natural color.

ONERESTORE® AND MULTIPLE SUBSTRATES



Pre-wetting

The most important thing to consider when choosing a restoration solution is its ability to work on multiple substrates without having to change methods. OneRestore® is without question uniquely suited to handle a wide variety of substrates.

Brick, block, natural stone, synthetic stone, glass, etc., all can be safely and effectively cleaned using OneRestore®. There is no need to mask any of these substrates.

In the example to the left, the historic public library in Canton, MA, had years of dirt and grime built up on the brick, limestone and granite. One product, OneRestore®, was able to safely and effectively clean all three substrates. The windows did not need to be masked during full scale cleaning, saving hours of time and money.

In the top picture, you can see the wall being pre-wet with water. The severity of the stains were obvious, even when the wall is wet. Water alone would not clean this building.

In the middle picture, you can see OneRestore® working as the foam runs down all three substrates.

In the bottom picture, you can see that all of the dirt and grime has been removed from the test area, making those surfaces look like new.

OneRestore® cleans safely, with undeniably impressive results.



Applied



After

ONE CHOICE...BECAUSE IT WORKS!

ONERESTORE® AND RUST STAINING

When minerals come into contact with water while on a surface, the chemical reaction between them and the water can cause rust looking stains. OneRestore has the chemistry to remove rust staining from many different surfaces to show a brand new look on both commercial and residential properties.



ONERESTORE® AND HARD WATER DEPOSITS ON BRICK

Brick occasionally becomes stained when water with a high mineral content settles on the surface. The hard water evaporates, leaving behind a whitish haze that requires the use of OneRestore to remove the hard water deposits.



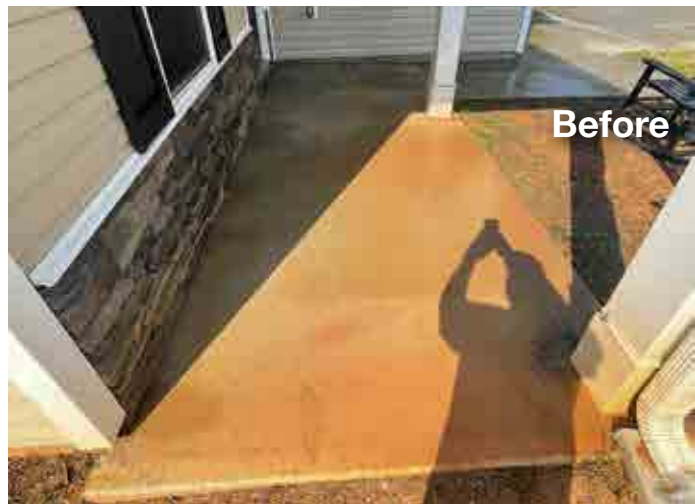
THE WAVE OF THE FUTURE

ONERESTORE® AND RED CLAY ON CONCRETE

A concrete substrate can take a variety of shapes and sizes, and can be covered by a multitude of coatings, paints or other materials to protect them from harsh, corrosive environments. The concrete on the base of this house was discolored with red clay stains. With just a couple applications, OneRestore transformed it to it's original color.



OneRestore was the easy choice for this contractor who was up against staining on the concrete at this southern home. This was just another success story of how OneRestore was able to restore this customers home back to where it was originally.



ONE CHOICE...BECAUSE IT WORKS!

ONERESTORE® AND ACM PANELS

This contractor used OneRestore to remove irrigation rust stains from the ACM panels on this commercial building. They didn't have to cover any plants, they just prewet, applied one application of OneRestore with a few minute dwell, and finished with a light pressure rinse and they were done. OneRestore has a remarkable effect on virtually every surface to clean staining like vanadium, pollution, rust, clay, and hard water stains as well as many more.

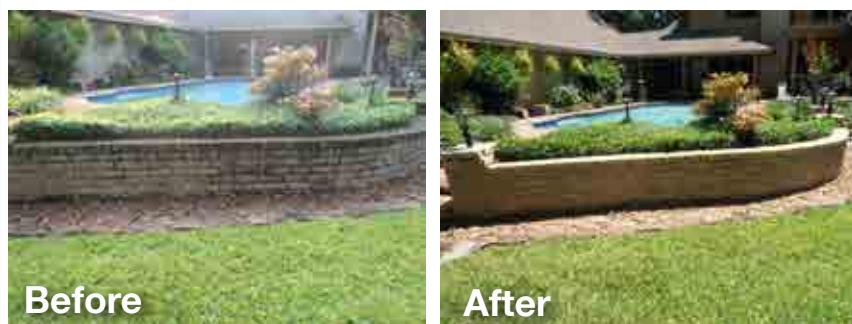
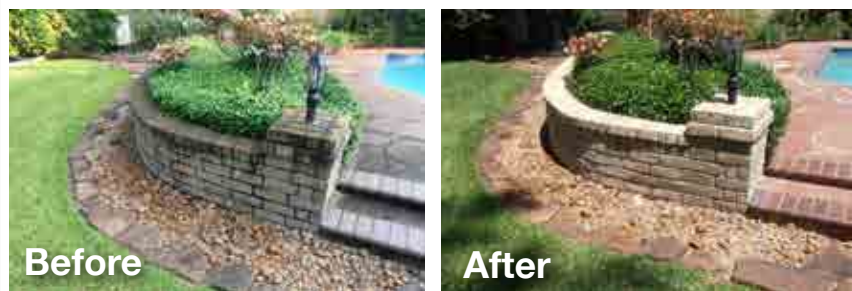


ONERESTORE® AND NATURAL STONE

Flagstone is a generic flat stone, sometimes cut in regular rectangular or square shape and usually used for paving slabs or walkways, patios, flooring, fences and roofing. It may be used for memorials, headstones, facades and other construction. Environmental elements can stain flagstone to an old and unattractive look. OneRestore will remove those stains and give the stone the natural look that it deserves.



OneRestore was able to clean the environmental stains from the natural stone, brick, and flagstone at this residential backyard area.



THE WAVE OF THE FUTURE

ONERESTORE® AND PAINTED METAL

Painted metal can be effected by a number of different staining, including environmental, hard water, rust and orange stains. OneRestore has the ability to clean virtually all surfaces including painted metal. OneRestore is your answer to all your restoration questions.



OneRestore was able to remove the black stains from this painted metal commercial building. This customer was happy to see their building transform back to a brand new look.



ONERESTORE® AND STAINLESS STEEL



This unpolished steel railing was cleaned with OneRestore and topped off with Cleansol BC to give it a nice clean shiny look.

The Ford's Theatre in Washington, DC is a landmark that deserves to look it's very best. This is where OneRestore comes in. Using the right chemistry is the difference between an old dirty look and a clean attractive one.



OneRestore was able to remove the rust and organic staining from the stainless walls on this public pool.



THE WAY OF THE FUTURE

**ALL OF EACO CHEM'S PRODUCTS
ARE DESIGNED FOR
PROFESSIONAL USE ONLY**



**HIGHEST
LEVEL
CLEAN**

**765 Commerce Ave.
New Castle, PA 16101
724-656-1055
www.eacochem.com
info@eacochem.com**