



RESTORATION

RESTORATION CLEANING



RESTORE
EVERYTHING
SAFELY®

Safe for buildings, people and the environment. Simple to learn, use and specify. Spray on/rinse off, no protecting glass, easy to test and specify.

THE WAVE OF THE FUTURE

ONE CHOICE...BECAUSE IT WORKS!

FOR PROFESSIONAL USE ONLY

THE BEST INFORMED CHOOSE



EaCo Chem has been producing exceptional cleaning chemicals for decades with nothing but the best results. Our chemistry has been approved worldwide on many projects. Professional cleaners that choose to stay ahead of their competition have one thing in common - the desire to be the best. That includes using the best chemicals.

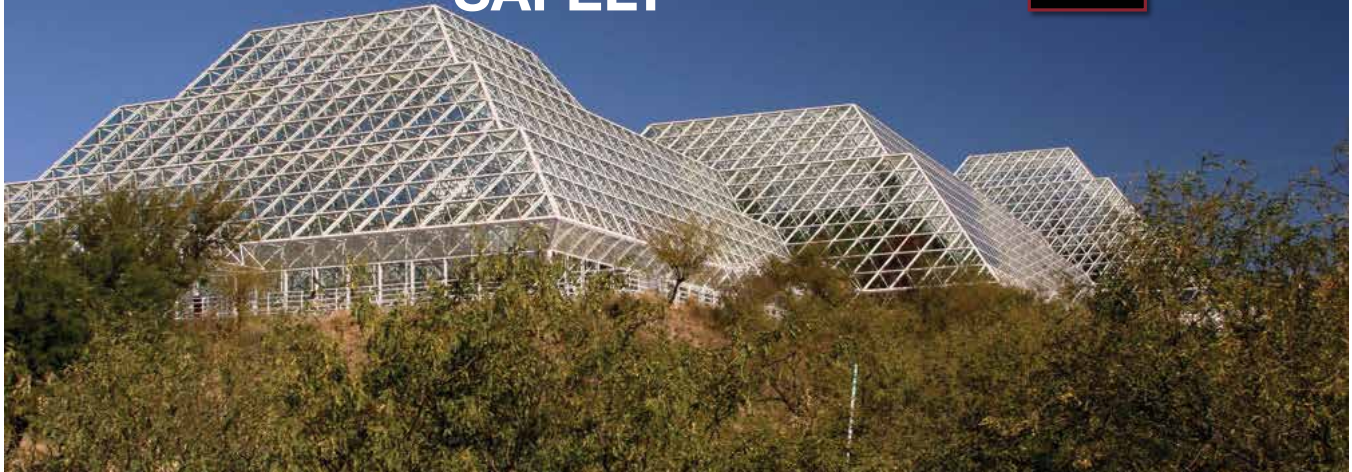


Stainless Steel Beach House - Cleansol BC with HD Britenol

INDUSTRIES WE SERVE:

- NEW CONSTRUCTION
- RESTORATION
- HOUSE & DECK
- FLEET WASHING
- HARDSCAPE
- PAINT STRIPPING
- WINDOW RESTORATION

**RESTORE
EVERYTHING
SAFELY®**



The Biosphere 2 - Oracle, AZ

- **Limestone**
- **Sandstone**
- **Brownstone**
- **Marble (unpolished)**
- **Precast**
- **Exposed Aggregate**
- **Cast Stone**
- **Poured Concrete**
- **Brick**
- **Block**
- **EIFS**
- **Terra Cotta**
- **Granite (unpolished)**
- **Alucobond**
- **Paint**
- **Glass**
- **Anodized Aluminum**
- **Vinyl**
- **Metals**
- **Wood**
- **Composite Decking**
- **Stucco**
- **Sealer Cleaning/Removal**

RESTORE EVERYTHING SAFELY®

THE WAVE OF THE FUTURE

TRADITIONAL RESTORATION

ONERESTORE®



OneRestore® is a breakthrough product that provides remarkable versatility cleaning power and safety all in one. Capable of removing the deepest stains from virtually any surface. It is also used to safely restore glass and anodized aluminum.

HERITAGE RESTORER



Heritage Restorer is a restoration detergent for historical or sensitive substrates. The product is based on our thoroughly developed non-corrosive technology. Cleaning power is achieved by a combination of over 25% surfactants, mild acids to melt metal and mineral oxide residue and water based solvents for hydrocarbon based residues

A.R.T. (Anodized Restoration Treatment)



A.R.T.'s unique chemistry is a solvent-based resin system designed for treating the surface of anodized aluminum to renew the satin luster that has been damaged by environmental or chemical pollutants. A.R.T. will stay on the surface for extended periods without cracking, lifting or peeling and is easily removed for re-treatment. Wipe on application. Product ships nonhazardous and nonflammable. A.R.T. is available in pints and gallons.

CLEANSOL BC



Cleansol BC may be the most versatile & safe cleaner for professional contract cleaners. Sold to contractors, which ships as noncorrosive, it can handle virtually every job around the house without scrubbing, including molding, siding, decks, gutters, concrete and awnings. Vehicles and equipment end up clean with a wax-like look. Industrial cleaning pros will find this product exceptional at brushlessly removing oxidized paint from metal siding as well as cleaning vinyl awnings and pollution streaks from EIFS. It is also excellent for industrial plant clean-up where stains must be removed without damage. This is an extraordinary super concentrate that really produces profits without adding liability.

HD BRITENOL



Use HD Britenol for cleaning any surface that has bad pollution, environmental, or discoloration stains. It is a safe siding stain remover for the home or deck. HD Britenol works great on wood, aluminum, vinyl, concrete, terra cotta, shingles, glass, brick, block or stone. It will remove almost any stain that Cleansol BC does not. HD Britenol will not harm people or animals, but care should be taken to protect plants. HD Britenol is sold as a concentrate for pro's. Is shipped non-hazardous.



ONE CHOICE...BECAUSE IT WORKS!

TRADITIONAL RESTORATION (cont.)

ABF RESTORATION



Ammonium Bifluoride restoration (ABF) is a very effective non-hydrofluoric restoration detergent. Originally designed for glazed brick and terra cotta cleaning. ABF offers the strength of Hydrofluoric Acid (HF) but with a higher degree of safety, and the ability to work without covering glass when used as directed. Do not allow product to dry on surface. ABF Restoration's acid blend is often more effective than HF at removing the black mineral stains that occur on glazed surfaces with almost no chance of burning. This is our most economical restoration detergent.

POLISHED STONE CLEANER



This unique chemistry is a neutral cleaner with a lot of advantages for interior cleaning. It has a very mild odor and is non-corrosive. Non-hazardous components make it safe for both the user and the environment. Polished Stone Cleaner is capable of removing smoke, heavy finger soils, sealers/polishes and foot traffic soil without any harm to the marble substrate. Another benefit is that it does not foam on pick up, so if you must vacuum the residue, you will not waste time clearing foam or defoaming. All these characteristics make the soap readily disposable to sanitary sewers or easily treated in waste reclaim systems.

SMOKE MELT



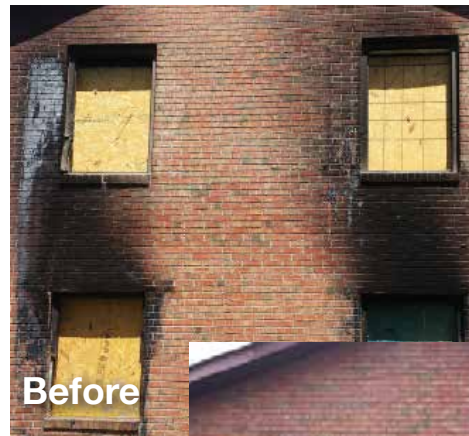
This is a highly alkaline cleaning product that will remove heavy soil deposits from metal, wood or masonry at high dilutions. Great care must be taken when applying this product because of its highly active penetrating nature. Smoke Melt will strip latex and enamel paints in a short time. Smoke Melt is good at softening the heavy black smoke on masonry that occurs as a result of fire damage.



Canton Library, Canton, MA



Pentecostal Church, Trenton, NJ



Before



After

NEXT LEVEL CLEANING... RESULTS THAT SELL

THE WAVE OF THE FUTURE

PAINT STRIPPERS & COATING REMOVERS

ACRYLISTRIP



AcryliStrip is a solvent-based sealer, stain, and paint stripper that has a wide range of applications. It is virtually instantaneous in penetrating most deck stains and paints. AcryliStrip is especially effective on removing curing compounds from flatwork concrete. It works just as effective on elastomerics, urethanes and acrylics.

C-TAR MELT



C-Tar Melt is a blend of water soluble, non hazardous ingredients, that give exceptionally powerful penetration and softening action. Do not dilute this product with water; in fact, its action will be stopped with the application of water. The product will aid in the separation of the tar residue from the rinse water when you contain and store the runoff for a short period of time. The ingredients do not harm the skin; though they will dry it out if left constantly exposed to the tar remover. C-Tar Melt is safe for wood, metal and masonry surfaces. This is a powerful penetrating system, so the best method of tar removal from masonry is to apply using a low-pressure sprayer. The dwell time will vary depending on the thickness.

INSTRIIP



InStrip is a safe, easy-to-use, fast interior paint stripper that works on your toughest paint stripping projects. InStrip is also a great option for exterior stripping as well. InStrip removes multiple layers of paint and will go through many types of coatings. Product works great on both horizontal and vertical surfaces. InStrip is particularly safe for both the environment and applicator.

InStrip does not contain water and should always be used undiluted. Application equipment should be solvent compatible. Always start by doing a test patch to determine proper dwell time to achieve desired results. Brush or roll product onto the surface to be stripped. Wait the appropriate time, then wipe off or remove completely with water. Note: on textured surfaces, you may have to apply a second coat with a brush, then rinse completely.



www.eacochem.com



THE WAY OF THE FUTURE

ONE CHOICE...BECAUSE IT WORKS!

PAIN STRIPPERS & COATING REMOVERS (cont.)

GRAF-EX



Graf-Ex is an easy to use multipurpose modern day stripper designed to be used where safety and performance are of equal importance. Graf-Ex is an undiluted product that is outstanding in the removal of inks and paints from painted surfaces. Graf-Ex does not harm most substrates and will not raise the grain of wood, cause flash rusting in metal, or damage fiberglass surfaces.

Graf-Ex is applied straight with either a low pressure spray or wiped on with a cloth. Allow Graf-Ex to sit on the surface long enough to remove the graffiti, but not long enough to remove paint beneath. Water will stop the reaction and allow you to remove the paint you're looking to remove.

LCS



LCS is a water based stripper for sealer, stain, and paint that has an extremely wide range of applications. LCS will remove multiple layers of latexes, acrylic latexes, alkyds, certain enamels, oil based stains, and other resin coatings. LCS is fast acting and extremely effective on removing graffiti from masonry substrates, as well as removing most stains from decks.



On the top, LCS was applied to a dry surface. Precautions were taken for the surrounding areas, especially the plant life. LCS was given approximately a 15 minute dwell time and then rinsed off. On the bottom, you can see the final results.



Irvine CA, glass covered solar panels industrial pollution OneRestore

RESTORE EVERYTHING SAFELY®

THE WAVE OF THE FUTURE

PAIN T STRIPPERS & COATING REMOVERS (cont.)

STRIPPER CREAM



Stripper Cream is a thickened multilayer paint remover with excellent consistency that can be sprayed or rolled on with equal ease. This alkaline product when applied to paint is very slow to dry out and can remain on the surface for days. Stripper cream makes an excellent graffiti remover for porous masonry surfaces. It also removes black crust from limestone and brick. Stripper Cream will take off the worst blackness from sandstone, caps, sills and foundation and easily removes vine stems from stone or brick.



On the top photo, Stripper Cream was sprayed on this brick wall with multiple layers of paint and graffiti. The stripper was applied thick to ensure it melted away all of the paint. The wall was pre-wet with a pressure washer before applying the product. Allow the product to dwell long enough for complete release. The bottom photo shows the paint being completely removed with a pressure washer.

STRIPSOL LO (low odor)

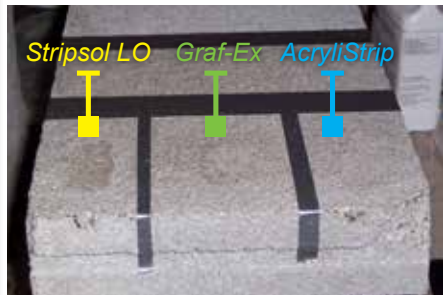
Stripsol LO is a non-hazardous, solvent based stripper designed to remove paint and adhesives off multiple surfaces. This product's low odor ability allows it to be used both indoors and outdoors. Stripsol LO penetrates quickly for effective removal of paint and adhesives. Stripsol LO is very effective at removing acrylics, graffiti and some stains from decks.



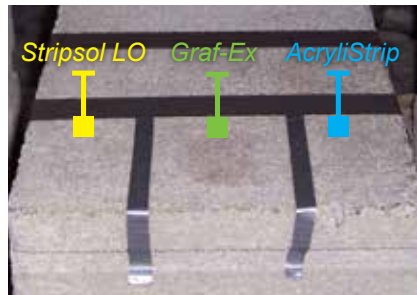
ONE CHOICE...BECAUSE IT WORKS!

TYPES OF COATINGS

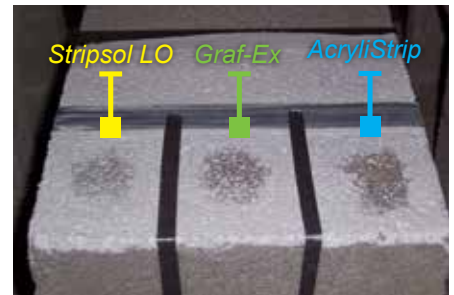
A Acrylic Semi-Gloss



B Solvent Based Silicone



C Solvent Based Acrylic



EXAMPLES OF OUR SUCCESS



Stain removal on wood fencing.



Paint removal from masonry.



Paint wash removal from masonry.

NEXT LEVEL CLEANING... RESULTS THAT SELL

THE WAVE OF THE FUTURE

URBAN HIGHRISE

The "Urban Highrise Restoration System" is designed to provide safe and effective cleaning procedures for highrise structures located in city settings. Not only will this system provide remarkable results for the structure itself, but it will also provide safety for surrounding buildings and vehicles passing by.

Principle Points of Safety:

1. OneRestore® is considered non-corrosive in its concentrated form, which means it will not harm glass, paint, skin or other substrates undiluted when used as directed.
2. Chlorine, which is the principal engine of OneRestore®, is present in all water that is treated for consumption in the U.S.A.
3. Neutralization has not been left to chance. OneRestore® is acidic and once you have applied the product to alkaline materials (such as limestone, mortar, aggregate, etc.), the two neutralize each other prior to the chemical run off. Cleansol BC, which is also alkaline, is used as a second step before rinsing to assure neutralization of any remaining residues.

The Process:

1. Pre-wet the surface, but do not saturate, especially to flash cool the surface.
2. Apply an application of OneRestore® to the surface with a low pressure sprayer and allow a five minute dwell time.
3. Continue to apply applications of OneRestore® with a low pressure sprayer based on your testing results (always test prior to full scale cleaning to determine number of applications and effectiveness).
4. Apply a single application of Cleansol BC diluted 50 parts water to 1 part solution before rinsing.
5. Using low pressure, begin rinsing the chemicals from the surface to enable a steady flow.
6. Once the bulk of the chemistry has been rinsed down, a higher pressure rinse can be used to remove the remaining material and debris from the surface.



The Transamerica building in downtown San Francisco was restored using the "Urban Highrise System."



The building is covered in crushed quartz.



The surrounding redwood trees were far too large to cover, so this system enabled the cleaning to proceed without harming the trees.

Although we suggest certain products for certain applications, we ALWAYS recommend pre-testing in a discreet area prior to full scale cleaning operation. This should confirm the effectiveness of any product in any situation. For more information, visit our website at www.eacochem.com or call (724) 656-1055!

www.eacochem.com



THE WAY OF THE FUTURE

ONE CHOICE...BECAUSE IT WORKS!

PRODUCT USE GUIDE

SAFE, COST EFFECTIVE, EXCELLENT CLEANING RESULTS

Substrates:			
Alucobond	Cleansol BC	HD Britenol	OneRestore®
Anodized Aluminum	OneRestore®	A.R.T. (after OneRestore®)	
Block	OneRestore®	ABF Restoration	
Brick	OneRestore®	ABF Restoration	Heritage Restorer
Brownstone	OneRestore®	Heritage Restorer	
Cast Stone	OneRestore®	Heritage Restorer	
Concrete (non-colored)	OneRestore®	ABF Restoration	
EIFS	Cleansol BC (pollution)	HD Britenol	OneRestore®
Exposed aggregate	OneRestore®	ABF Restoration	Heritage Restorer
Glass	OneRestore®	Graf-Ex	
Limestone	OneRestore®	Heritage Restorer	Stripper Cream
Marble	HD Britenol (polished)	Polished Stone Cleaner	OneRestore® (unpolished)
Metals	HD Britenol	OneRestore®	
Paint	Cleansol BC	HD Britenol	
Precast	OneRestore®	ABF Restoration	
Sandstone	Stripper Cream	Heritage Restorer	
Slate	Cleansol BC	Heritage Restorer	
Terra cotta	OneRestore®	Heritage Restorer	
Vinyl	Cleansol BC	HD Britenol	OneRestore®
Wood	HD Britenol	Cleansol BC	



Memorial Hermann Hospital TX - painted paneling system - Cleansol BC

RESTORE EVERYTHING SAFELY®

THE WAVE OF THE FUTURE

HISTORICAL STRUCTURES



Consulate General of the Republic of Poland, New York



Fairmont Hotel, New Orleans



The Phelan Building, San Francisco

**RESTORE
EVERYTHING
SAFELY®**

www.eacochem.com



THE WAY OF THE FUTURE

**ALL OF EACO CHEM'S PRODUCTS
ARE DESIGNED FOR
PROFESSIONAL USE ONLY**



**HIGHEST
LEVEL
CLEAN**

**765 Commerce Ave.
New Castle, PA 16101
724-656-1055
www.eacochem.com
info@eacochem.com**