



# **PAINT STRIPPING**

**PAINT STRIPPING RESTORATION**



**RESTORE  
EVERYTHING  
SAFELY®**

**Breakthrough products that provide remarkable versatility, stripping power and safety all in one.**

THE WAVE OF THE FUTURE

**ONE CHOICE...BECAUSE IT WORKS!**

**FOR PROFESSIONAL USE ONLY**

**THE BEST INFORMED CHOOSE**



EaCo Chem has been producing exceptional cleaning chemicals for decades with nothing but the best results. Our chemistry has been approved worldwide on many projects. Professional cleaners that choose to stay ahead of their competition have one thing in common - the desire to be the best. That includes using the best chemicals.



Color concrete sealer removal AcrylicStrip cleaned with NMD 80

### **INDUSTRIES WE SERVE:**

- NEW CONSTRUCTION
- RESTORATION
- HOUSE & DECK
- FLEET WASHING
- HARDSCAPE
- PAINT STRIPPING
- WINDOW RESTORATION

## **GENERAL FIELD TEST**

### **IDENTIFYING WATER-BASE AND OIL-BASED PAINTS:**

1. In an inconspicuous area, clean the paint surface with a general purpose cleaner. Let dry or wipe dry.
2. Rub the clean surface using a clean rag. Dampen with denatured alcohol. If you see paint residue on the rag, it is most likely water-based paint.
3. After rubbing the area with denatured alcohol, feel the surface. If smooth surface, and no paint residue, then the paint is oil-based. If slight tacky surface and paint residue, then the paint is water-based.

Latex paints are made from a water-soluble base. Enamel paints are made from an oil base. For exterior house paints, both enamel and latex paints are commonly used.

*\*\*Always refer to the product data sheets prior to using any chemical. Always clean a test area and allow to dry before determining suitability of any cleaning product.*



**RESTORE EVERYTHING SAFELY®**

THE WAY OF THE FUTURE

## PRODUCTS

# INSTRIP

**InStrip** is a safe, easy-to-use, fast interior paint stripper that works on your toughest paint stripping projects. **InStrip** removes multiple layers of paint and will go through many types of coatings. Product works great on both horizontal and vertical surfaces. **InStrip** is particularly safe for both the environment and applicator.

### Application Process:

Application equipment should be solvent compatible. Always start by doing a test patch to determine proper dwell time to achieve desired results. Use a putty knife or a brush to apply InStrip to the desired surface. Wait the appropriate time, then wipe off or remove completely with water.

Note: On textured surfaces, a second coat may need to be applied with a brush. Rinse completely. When stripping paint from thin wood veneer a long dwell time may loosen the bonding adhesive.



Limitations: Do not get product on surfaces not intended to be stripped.

### Benefits:

- Biodegradable
- Non-toxic
- Low Odor
- Non-Corrosive

### Surfaces Safely Used On:

- Metal
- Wood
- Concrete
- Brick

### Removes:

- Primers
- Solvent based paints
- Water-based paints
- Shellac
- Stains
- Urethanes
- Varnish

# STRIPPER CREAM

**Stripper Cream** is a thickened multilayer paint remover with a versatile consistency that gives it the ability to be either rolled or sprayed on with ease. This alkaline product, when applied to paint, is very slow to dry out and can remain on the surface for days. **Stripper Cream** makes an excellent graffiti remover for porous masonry surfaces. It also removes black crust from limestone and brick. **Stripper Cream** will take off the worst cases of blackness from sandstone, caps, sills and foundation.

### Application Process:

Apply a coating of **Stripper Cream**. Use a roller or brush if necessary to push product into mortar crevices. Allow product to dwell on the surface for an extended period of time. Test a small area to determine when optimum paint removal will occur. Once the time has been determined, then rinsing process should begin. To prevent chemical from spraying back on you, first rinse surface using a garden hose low pressure. Then you can follow with a pressure wash rinse to complete the paint stripping process.



Limitations: Plants can be damaged by direct application.

### Benefits:

- Ready to use
- Pleasant odor
- Slow to dry out

### Surfaces Safely Used On:

- Limestone
- Stone
- Sandstone
- Brick
- Caps
- Sills
- Foundations

### Removes:

- Black crust
- Graffiti



[www.eacochem.com](http://www.eacochem.com)

THE FUTURE OF THE FUTURE

**ONE CHOICE...BECAUSE IT WORKS!**

## PRODUCTS (cont.)



**Graf-Ex** is an easy to use multipurpose modern day coating stripper designed to be used where safety and performance are of equal importance. **Graf-Ex** is a non-dilutable product that is outstanding in the removal of inks and paints from painted surfaces. **Graf-Ex** does not harm most substrates and will not raise the grain of wood, cause flash rusting in metal, or damage fiberglass surfaces.

### Application Process:

**Graf-Ex** is not dilutable. Use it straight and apply with either a low pressure spray unit or wipe it on with a cloth. Spray the product on from top down and with a side to side overlapping motion. Often just a wipe with a damp cloth is all that is necessary to remove the paint or ink. As with all coating strippers, proper testing of the material or the coating to be stripped is the only way to determine the correct procedure. Basic guidelines would be that the material works better at an ambient temperature in the 70° Fahrenheit range. Proper ventilation should always be a consideration when long term exposure will occur. It is recommended that skin contact be kept to a minimum and at least a water rinse be used after contact.

Sometimes two applications, one following the other after a short soak period, will out-perform a single application and mechanical removal. The material is thin and penetrates extremely quickly to soften inks or paints. Dwell times will vary with thickness of the coating to be stripped, but **Graf-Ex** can remove many materials in a fifteen minute time span. Pressure wash rinsing on masonry or stone is recommended for best results. Craftsmanship determines the appropriate pressures for rinsing. A thorough rinse job is always recommended, however, our chemistry never requires flooding a wall. Pressures that mark or damage the surface should be avoided. When in doubt, follow the manufacturers recommended P.S.I. for the substrate on which you are working.

### Benefits:

- Low Odor
- Biodegradable
- Nonflammable

### Surfaces Safely Used On:

- Wood
- Metal
- Fiberglass
- Painted Surfaces

### Removes:

- Ink
- Graffiti
- Solvent based paints
- Water based paints
- Acrylics



**BEFORE**



**AFTER**



**BEFORE**



**AFTER**

*Limitations: Graf-Ex will not work on epoxy or urethane type coatings. Do not use on plexiglass.*

**NEXT LEVEL CLEANING... RESULTS THAT SELL**

THE WAVE OF THE FUTURE

## PRODUCTS (cont.)

# AcrylicStrip

**AcrylicStrip** is a solvent-based sealer, stain, and paint stripper that has a wide range of applications. It is virtually instantaneous in penetrating most deck stains and paints. **AcrylicStrip** will remove multiple layers of acrylics, acrylic latexes, polyurethane, and other resin coatings.

### Application Process:

**AcrylicStrip** is best applied through a low pressure application system, but can be brushed, wiped, or rolled on the surface. Depending on the paint or coating involved, more than one application may be needed. Apply the chemical from the top down using a side to side spray. A small hand pump garden sprayer works very well for small jobs. Allow the AcrylicStrip to sit on the surface for at least five minutes before doing a scratch test.

When you are doing the scratch test and you see that the coating is releasing from the substrate, you are ready to rinse. If you do not see the surface or the coating is gummy, reapply the product and wait an additional 10 minutes before retesting. Pay careful attention to sheltered areas under overhangs or railings, as these areas see less harmful weathering and fading and therefore may need repeated applications. Rinsing may be accomplished with a pressure washer, garden hose, or water and a scrub brush. Note: if you are using a pressure washer to rinse wood, keep the nozzle six inches from the surface.

### Benefits:

- Wide range of applications
- Multiple surfaces

### Surfaces Safely Used On:

- Decks
- Wood
- Metal
- Sidings
- Masonry surfaces

### Removes:

- Stains
- Paints
- Acrylics



*Limitations: Plants may be damaged by direct contact. Cannot mix with water.*



**ONE CHOICE...BECAUSE IT WORKS!**

## PRODUCTS (cont.)

# STRIPSOLLO

**Stripsol LO** is designed to remove paint and adhesives from multiple surfaces. Because of this product's unique low odor chemistry, it can be used both indoors and outdoors. **Stripsol LO** penetrates quickly for effective removal of paint and adhesives.

### Application Process:

**Stripsol LO** is best applied through a low pressure application system, but can be brushed, wiped, or rolled onto the surface. Depending on the paint or coating to be removed, more than one coat may be needed. Apply the stripper from top down using a side to side spray. A small hand pump garden sprayer works very well for small jobs. Allow **Stripsol LO** to sit on the surface for at least five minutes before doing a scratch test.

When you are doing the scratch test and you see the substrate everywhere you scratched, you are ready to rinse. If you do not see the surface or the coating is gummy, reapply the product and wait an additional 10 minutes before re-testing. Pay careful attention to sheltered areas under overhangs or railings, as these areas see less harmful weathering and fading and therefore may need repeated applications. Rinsing may be accomplished with a pressure washer, garden hose, or water and scrub brush. Note: if you are using a pressure washer to rinse wood, keep the nozzle six inches from the surface.

### Benefits:

- Low odor
- Can be used indoors
- Penetrates quickly

### Surfaces Safely Used On:

- Concrete
- Decks
- Wood
- Masonry
- Brick
- Metal

### Removes:

- Adhesives
- Paint



*Limitations: Do not get product on surfaces not intended to be stripped. Cannot mix with water.*

### \* Tips for the Pros \*

## 2-STEP PROCESS FOR REMOVING RUBBERIZED ALKYD PAINTS



AcrylicStrip is sprayed onto the brick wall to penetrate the rubberized alkyd paint.



Stripper Cream is rolled overtop the AcrylicStrip application and allowed to dwell.



After a 4-hour dwell time, the softened paint is easily removed with a scraper.



A spray bottle rinse is all that is needed to clean the residue from the mortar joints.



Better?  
You decide...

# AcrylicStrip

**RESTORE EVERYTHING SAFELY®**

# STRIPPER CREAM

THE WAY OF THE FUTURE

## PRODUCTS (cont.)



**LCS** is a water based coating stripper for sealer, stain, and paint that has a wide range of applications. It is fast acting in penetrating most deck stains and paints. **LCS** will remove multiple layers of latexes, acrylic latexes, alkyds, certain enamels, oil based stains, and other resin coatings.

### Application Process:

Protect all surrounding surfaces from over spray, as **LCS** may harm these surfaces. Protect plants from rinse water if you are not neutralizing.

Apply **LCS** to a dry surface. Allow the product to dwell on the surface for 15 minutes. Starting at the top, mist water onto the surface from a garden hose before pressure rinsing. If you are not going to pressure wash, scrub with a stiff bristle brush while only the **LCS** is on the surface. Wood may darken after **LCS** is used on the surface. Using Britenol undiluted after rinsing the **LCS** can brighten the wood. Coverage rates will vary from 250-400 sq. ft./gal. Depending on the surface porosity, texture, and severity of staining.



*Limitations: Plants may be damaged by direct contact. Can burn skin.*

### Benefits:

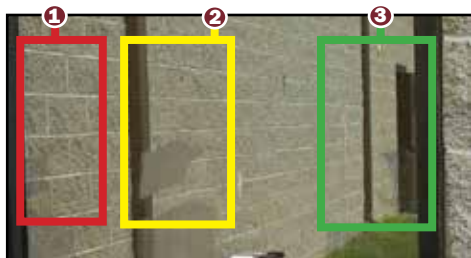
- Not flammable
- Citric scent
- Wide range of applications
- Quick penetration

### Surfaces Safely Used On:

- Wood
- Bricks
- Decks
- Masonry
- Concrete

### Removes:

- Latexes
- Acrylic latexes
- Alkyds
- Enamels
- Stains
- Resin coatings
- Graffiti
- Sealers
- Mineral pigment



- ① Modified siloxane    ② Acrylic resin    ③ Water based siloxane

**Chem's OneRestore®**. This brown residue was an apparent reaction with the surface. A wipe with undiluted **OneRestore®** removed the film immediately.

We anticipated no special precautions with **Graf-Ex**, as it is safe on anodized and glass. Its main objective is to remove graffiti from painted surfaces. It is water rinseable and is stopped by the addition of water so it is very controllable. We observed on another window, a hazing that occurred on the mirrored glass from the **OneRestore®** but not the **Graf-Ex**. This area had another stripper used to remove another siloxane. We recommend that if little black dots or speckles on the surface can be seen, abstain from using **OneRestore®** on that area.

The appropriate procedure for removing the coating would be to use a cloth or brush that has been wetted with **Graf-Ex** and wipe it on the coating. The softening should occur immediately if the coating is fresh or in 15 to 30 seconds if it has cured for weeks. Simply wipe it off with a clean cloth or rinse with a spray bottle, garden hose, or pressure washer. A good sign of successful removal is a lack of beading of water when dropped onto the surface. If beading still occurs, squeegee the glass and repeat with a longer soak, then remove. **OneRestore®** is needed to remove water based siloxane stains, which should be used straight, sprayed or wiped on, then removed as stated above.

## TYPES OF SEALERS

Pictured are the actual test samples of coatings left on mirrored glass at **EaCo Chem Inc.** for one month. In every case the sealer was applied very heavily to mimic a worst case scenario. All the products were removed almost instantaneously with **EaCo Chem's Graf-Ex**. A brown residue was noted with modified polysiloxane and water based siloxane that was removed with **EaCo**

Acrylic Coating  
Use Graf-Ex



Water Based Acrylic  
Coating Use Graf-Ex



**ONE CHOICE...BECAUSE IT WORKS!**

## **GRAFFITI REMOVAL OPTIONS**

### **Painted Surfaces:**

**Graf-Ex** is a special purpose coating stripper designed for safety and low odor. It is an outstanding performer in the removal of inks and paints from painted surfaces. Water can be used to stop its penetration and to rinse. **Graf-Ex** is not dilutable. Use it straight and apply with either a low pressure spray or wipe it with a cloth and rinse.

### **Brick:**

**AcrylicStrip**, **Stripper Cream** or **LCS** will remove most graffiti. **AcrylicStrip** is a solvent based stripper, good on a wide variety of paints, but safe for the environment. **LCS** is a thin water based product that should be sprayed or agitated, then pressure washer rinsed. **LCS** is caustic based. **Stripper Cream** is a paste used for multi layered graffiti and tags. It is caustic based and requires time for complete removal.



### **Graffiti on Block, Limestone and Sandstone:**

**Stripper Cream** is recommended for the removal of graffiti on limestone because it will not change the color of the stone or damage its structural quality. First, pre-wet the wall with a pressure washer. The product may be rolled or brushed on to help it to be pushed into the interstitial pores of the stone. For large areas, spraying would be beneficial.



## **MULTI-LAYER PAINT REMOVAL**

When removing multi-layer paint, it is important to apply the coating stripper heavily enough to dissolve all layers of paint. Apply on the surface from in to out and down to up. Remember, this is not paint and you are not trying to spread it thinly. Thick is better as this leaves adequate caustic in an area to get through multiple layers. **Stripper Cream** will work more quickly in warmer temperatures. If the temperature drops overnight, the stripping reaction will slow.

We do not recommend covering everything during a coating removal job, but you should cover anything that might be immediately harmed by the undiluted stripper during application. If you get the chemical on anything, especially people, wipe it off with a dry cloth, spray with vinegar to neutralize and then rinse with water. Do not add water first or use a damp cloth, as water will activate the chemical. Make sure you get a heavy concentration of the stripping agent under the eaves, window sills or on porch areas where the paint has been sheltered from the weather and is therefore not subject to as much fading or degradation over the years.

Following the easy part, which is letting the chemistry work, do a scratch test with a putty knife or screwdriver. If in the places in which you scratch you see the substrate, you are ready to start removal.

To start rinsing, a pressure washer or garden hose can be used at low pressure. Start the rinsing process at the top and work down. After you have pre-rinsed down a few feet, quickly apply another application of the **Stripper Cream** diluted 4:1 with water. Allow this to sit on the surface as you proceed pre-rinsing down the wall.

After going all the way down the wall, go back to the top with the pressure washer and test to see if the wall is ready for final rinse. You should see almost 100% release when you pressure wash. Any section, such as under the eaves, that is highly resistant to stripping should just be re-coated with the undiluted stripper. A lot of caustic in this process can be sucked into the unpainted masonry which, especially in historic jobs, can be porous. Normally, these will need re-pointed and you would remove the resulting caustic efflorescence after pointing by using **NMD 80™** at 4:1 dilution.



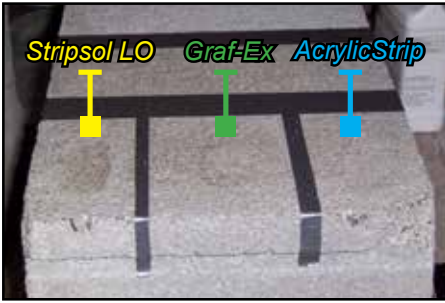
**NEXT LEVEL CLEANING... RESULTS THAT SELL**

THE WAY OF THE FUTURE

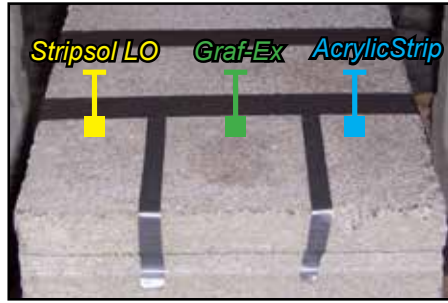


# COATINGS

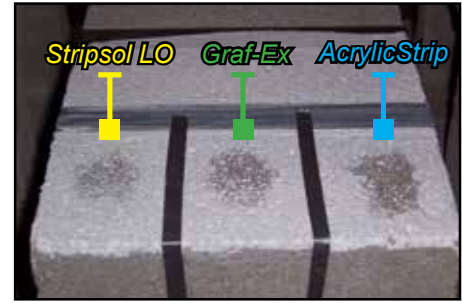
**A** Acrylic Semi-Gloss



**B** Solvent Based Silicone



**C** Solvent Based Acrylic



Coatings A+B both dry clear on block. To check for complete removal, you would place a drop of water on the surface. If the drop stays on top and is not absorbed, then coating is not removed. If the drop is sucked into the surface, the sealer is completely gone.

C is a white pigmented waterproofing material. Removal is obvious where the substrate can be seen through the white surface coating.

## SEALER REMOVAL

Rated from 0-5, 0 being the Least Effective while 5 being the Most Effective.

	Stripsol LO	Graf-Ex	AcrylicStrip
(A) Acrylic Semi-Gloss	5	4	4
(B) Solvent Based Silicone	4	5	4
(C) Solvent Based Acrylic	3	4	5

\* These products were given a 30 minute dwell time

• All other products given 10 minute dwell times

### \* Tips for the Pros \*

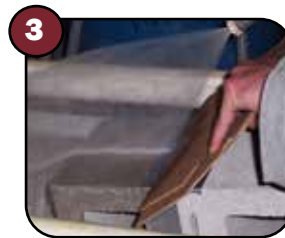
## TEST SAMPLES OF SILICATE BEING REMOVED FROM CONCRETE



Test samples of silicate left on concrete.



Product is sprayed undiluted and allowed to dwell for 15-20 min.



Pressure wash off.

Silicate Sealer Remover



Silicate sealer has been removed on bottom portion of masking tape.

When testing to see if silicate sealer is removed, put a drop of water on the surface and watch if it stays on top or absorbed into the surface. If the water bubbles and stays, then it is still there. If it is absorbed, then it has been removed.

When a product fails, or is applied improperly, a white crystalized or chalky deposit will form on top.

Concrete Chemical Co. has recommended the use of Silicate Blush Remover to take off the sealer that has been applied improperly without damaging the surface.



**ONE CHOICE...BECAUSE IT WORKS!**

## DECK STRIPPING

**EaCo Chem's LCS** will remove multiple layers of latexes, acrylic latexes, alkyds, certain enamels, oil based stains, and other resin coatings. This coating stripper is not flammable and has a citrus scent. This chemical may cause harm on some substrates to which it would be applied including bare wood, metals, asphalt shingles, vinyl siding and aluminum trim. Plants may be damaged by direct application so take care to not allow the product to contact plants when you are applying.

Always test the product in an inconspicuous area before starting the job. **LCS** has an extremely wide range of applications. It is virtually instantaneous in penetrating most deck stains and paints. Limitations of the product include keeping the chemical from directly interacting with plants and unprotected skin as the product may harm plants and burn skin. To avoid harm to masonry, do not clean when temperatures are below freezing or that may drop below freezing overnight. Best cleaning results are achieved when air and masonry surface temperatures are 40° Fahrenheit or above. Testing should confirm cleaning effectiveness on each type of surface and stain designated to be cleaned. Tests should also be done to determine the desired surface contact time and any potential for adverse reactions with adjacent materials. Allow test panels to dry thoroughly before evaluating final appearance and results.



**LCS**

**AcrylicStrip** is a solvent based sealer, stain, coating and paint stripper with a wide range of applications. **AcrylicStrip** will remove multiple layers of acrylics, deck sealers, polymer coatings, latexes, acrylic latexes, alkyds, enamels, oil-based stains, polyurethanes and other resin coatings.

**Application Instructions:** **AcrylicStrip** is best applied through a low pressure application system, but it can be brushed, wiped, or rolled on to the surface. Coverage is expected to be between 250 to 400 sq. ft. per gallon. Results will be faster and more complete on horizontal surfaces. Depending on the paint or coating involved, more than one coat or a second application may be needed. If you find that surface under your paint is gray or weathered, try some Britenol to restore it to the original color without harming the surface.



**AcrylicStrip**

## MASTIC ADHESIVES

Mastic is an adhesive usually black/tan colored adhesive, used to adhere ceramic tile, asphalt tile, and outdoor/indoor carpet. Use **Graf-Ex** for indoor projects or **AcrylicStrip** if project for outside projects for where adequate ventilation is available.



\*\*Always refer to the product data sheets prior to using any chemical. Always clean a test area and allow to dry before determining suitability of any cleaning product.

**RESTORE EVERYTHING SAFELY®**

THE WAVE OF THE FUTURE

# SPECIALTY STRIPPING

## Adhesives

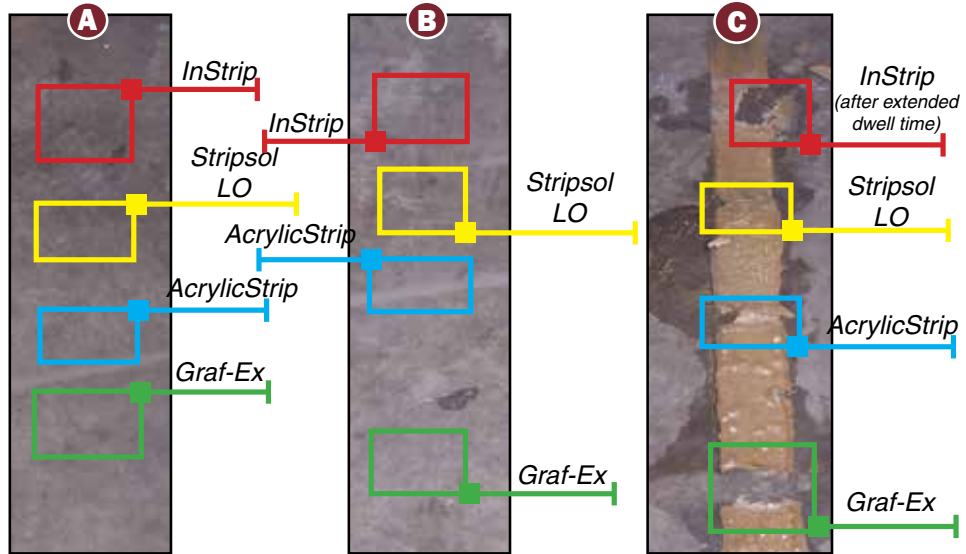
Coatings A+B both dry clear on block. To check for complete removal, you would place a drop of water on the surface. If the drop stays on top and is not absorbed, then coating is not removed. If the drop is sucked into the surface, the sealer is gone.

C is a pigmented adhesive. Removal is obvious where the substrate can be seen through the white surface coating.

Water based adhesive for interior use

Solvent based interior adhesive

Solvent based exterior adhesive



## ADHESIVE REMOVERS

Rated from 0-5, 0 being the Least Effective while 5 being the Most Effective.

	InStrip*	Acrylistrip	Stripsol LO	Graf-Ex
(A) Water Based Adhesive for Interior Use	5	5	5	5
(B) Solvent Based Interior Adhesive	5	5	4.5	4.5
(C) Solvent Based Exterior Adhesive	5	0.5	1	5

- \* These products were given a 30 minute dwell time
- All other products given 10 minute dwell times

# PAINT STRIPPING CHARTS

SOFTWOOD	Stripper Cream*	InStrip*	Acrylic-Strip	Stripsol LO	LCS	Graf-Ex
(A) Shellac	5	5	5	5	5	5
(B) Black Lacquer	4	5	5	5	4	5
(C) Epoxy, black appliance	4	5	3	3	4	0
(D) Water-based polyacrylic	1	5	5	5	1	5
(E) Varnish	1	5	2	1	0	2
(F) Timber Oil	4	1	1	1	5	1
(G) Primer White Alkyd Resin	1	5	5	0	3	0
(H) Polyurethane	5	5	5	3	1	4
(I) Enamel, Black high perf, oil based	4	4	4	1	4	2

HARDWOOD	Stripper Cream*	InStrip*	Acrylic-Strip	Stripsol LO	LCS	Graf-Ex
(A) Shellac	5	5	5	5	5	5
(B) Black Lacquer	4	5	5	4	4	5
(C) Epoxy, black appliance	5	4.5	4.5	4.5	4.5	4.5
(D) Polyacrylic	2	5	5	4	3	5
(E) Primer white alkyd resin	0.5	4.5	4	4.5	1	4.5

METAL	Stripper Cream*	InStrip*	Acrylic-Strip	Stripsol LO	LCS	Graf-Ex
(A) Epoxy, Black appliance	4	5	5	5	3	5
(B) Primer, white alkyd resin	4.5	3	5	4	1	4.5
(C) Chrome, rust-oleum solvent enamel	1.5	5	5	5	3	5
(D) Enamel, Black Glass, high perf oil	0.5	5	5	5	2	5

Rated from 0-5, 0 being the Least Effective while 5 being the Most Effective.

\*These products were given a 30 minute dwell time

- All other products given 10 minute dwell times



**ALL OF EACO CHEM'S PRODUCTS  
ARE DESIGNED FOR  
PROFESSIONAL USE ONLY**



**HIGHEST  
LEVEL  
CLEAN**

**765 Commerce Ave.  
New Castle, PA 16101  
724-656-1055  
www.eacochem.com  
info@eacochem.com**